



IMPACT REPORT

WHITE PONY EXPRESS | 2025



EVE BIRGE | CEO



Dear Partners and Friends,

In 2025, White Pony Express continued an extraordinary journey of service. With 2,000 volunteers alongside our small and dedicated staff team, we delivered over four million fresh, nutritious meals and other survival essentials to more than a hundred thousand neighbors across Contra Costa County. When needs shifted—during disasters, economic hardship, or moments of crisis—our community responded with creativity and resolve.

Yet our impact is not measured only in pounds of food rescued or families served. It is measured in how we serve: with respect, warmth, and love. Love is the essential ingredient in everything we do.

Our founder, Dr. Carol Weyland Conner, envisioned White Pony Express as more than a food recovery organization. She created a model that connects abundance with need while advancing a more compassionate and sustainable food system. Above all, she saw service as an expression of love. As she reminds us, “The smallest act of love has an effect. People see what you are doing. The world notices.”

Thanks to our expanded Concord headquarters, we were able to recover and distribute 20% more fresh food in 2025, increasing the flow of nourishment to our neighbors—and we intend to keep building on this momentum in the year ahead.

None of this would be possible without you. Together we are strengthening the safety net for our neighbors and building a more caring community for all.

Thank you for being part of this impactful effort of loving service.

Very warmly,

Eve

MISSION

To eliminate hunger and poverty by delivering the abundance all around us to those in need—WITH LOVE.

VISION



FEEDING OUR NEIGHBORS



DELIVERING WITH LOVE



PROTECTING THE ENVIRONMENT

VALUES

APPRECIATION

We provide clear pathways for communication and value the ideas and perspectives of volunteers, recipients, and donors.

RESPECT

Staff and volunteers follow through on our mission despite inconvenience. We strive to be considerate, responsive, equitable, and reliable in all we do.

COLLABORATION

By working together and listening to volunteers, recipients, and donors we will arrive at a better solution than we could have found alone.

SELFLESS SERVICE

As a vehicle for service, WPE members and volunteers cheerfully and lovingly aid those in need without thought of reward.

2025 MILESTONES

LA Firestorm Response

Mobilized the community to collect gift cards and heartfelt notes for affected families.



Volunteer Engagement

Celebrated the selfless service of WPE's over 2,000 volunteers at 4 recognition events.



Community Events

Presented at and hosted over 80 community events across the state.



SNAP Fill the Gap Food Drive

Hosted a countywide food drive and collected the equivalent of 17,000 meals.



Black Infant Health Partnership

Supported 350 housing insecure mothers with personal and baby items.



Drive Thru Event

Partnered with Kaiser Permanente in Antioch to provide groceries, sweet treats, gifts, toys, and hygiene kits to over 200 local families.



Lieutenant Governor and Congressional Visitors

Hosted Lieutenant Governor Eleni Kounalakis in response to the SNAP funding cuts.



Group Volunteers

Hosted 166 corporate groups, businesses and clubs at White Pony Express' distribution center.



2025 BY THE NUMBERS



4,155,125

MEALS
RECOVERED



4,986,150

POUNDS OF
FOOD RESCUED



135,000

INDIVIDUALS
SERVED



12,600

POUNDS OF FRESH
FOOD DELIVERED DAILY



144

NONPROFIT PARTNERS
RECEIVED FOOD



221

ACTIVE VOLUNTEER
FOOD RUNNERS USING
WPE'S APP



2,000

AMAZING
VOLUNTEERS



47,500

ESSENTIAL ITEMS
DELIVERED



8,035

METRIC TONS OF
GREENHOUSE GASES
AVOIDED

INCREASED FOOD
DONATIONS BY

20%

2024 vs 2025

NONPROFIT PARTNERS

TYPES OF NONPROFITS SERVED

In 2025, WPE delivered more than 4 million meals to 144 nonprofits including schools, shelters, and senior programs, ensuring consistent support across our community. In times of hardship, we say yes, mobilizing quickly to address unmet needs.

23

WPE SCHOOL
PANTRIES

13

SENIOR HOUSING
COMPLEXES

18

UNHOUSED
SUPPORT

49

GENERAL
PANTRIES

8

DINING
ROOMS

15

GENERAL
HOUSING

18

COMMUNITY
CENTERS



“When SNAP was disrupted, WPE’s deliveries became a lifeline for us. They kept our shelves full without draining our limited budget. Because of that support, we were able to redirect funds into urgent client services including our tutoring program, which is transforming the confidence and academic habits of so many students. WPE’s love in action truly becomes hope in motion for our families.”

MARJORIE TRUJILLO
Administrator, RR Ministries — **Pittsburg**

MEALS BY THE MILES

RECIPIENT PARTNERS GEOGRAPHICALLY

WEST CONTRA COSTA COUNTY

854,620 MEALS +10%
1,025,544 POUNDS ■ 31 PARTNERS

RICHMOND 655,832 MEALS +6%
786,999 POUNDS ■ 21 PARTNERS

SAN PABLO 183,010 MEALS +29%
219,613 POUNDS ■ 6 PARTNERS

RODEO 9,720 MEALS -4%
11,665 POUNDS ■ 1 PARTNER

EL CERRITO 4,511 MEALS +15%
5,414 POUNDS ■ 2 PARTNERS

PINOLE 1,544 MEALS +1,073%
1,853 POUNDS ■ 1 PARTNER

CENTRAL CONTRA COSTA COUNTY

768,343 MEALS +33%
922,012 POUNDS ■ 61 PARTNERS

CONCORD 392,896 MEALS +54%
471,476 POUNDS ■ 30 PARTNERS

PLEASANT HILL 146,030 MEALS +52%
175,236 POUNDS ■ 7 PARTNERS

MARTINEZ 59,983 MEALS -17%
86,376 POUNDS ■ 6 PARTNERS

ORINDA 53,967 MEALS -11%
64,761 POUNDS ■ 2 PARTNERS

WALNUT CREEK 43,070 MEALS +15%
51,685 POUNDS ■ 6 PARTNERS

LAFAYETTE 38,703 MEALS -9%
46,444 POUNDS ■ 4 PARTNERS

SAN RAMON 13,055 MEALS +275%
15,666 POUNDS ■ 4 PARTNERS

CLAYTON 5,867 MEALS -20%
7,041 POUNDS ■ 1 PARTNER

DANVILLE 2,522 MEALS +6%
3,027 POUNDS ■ 1 PARTNER

EAST CONTRA COSTA COUNTY

2,175,769 MEALS +20%
2,610,923 POUNDS ■ 52 PARTNERS

ANTIOCH 1,133,482 MEALS +23%
1,360,179 POUNDS ■ 21 PARTNERS

PITTSBURG 390,076 MEALS +17%
468,092 POUNDS ■ 14 PARTNERS

BAY POINT 222,187 MEALS +14%
266,625 POUNDS ■ 5 PARTNERS

BRENTWOOD 219,915 MEALS +36%
263,942 POUNDS ■ 6 PARTNERS

OAKLEY 158,012 MEALS +7%
189,615 POUNDS ■ 5 PARTNERS

BETHEL ISLAND 52,058 MEALS +1%
62,470 POUNDS ■ 1 PARTNER

MAJOR FINANCIAL DONORS

CORPORATE | FOUNDATION | GOVERNMENT



MEASURE X



Hearts Path Foundation



Concord/Pleasant Hill Health Care District

THE CHURCH OF JESUS CHRIST OF LATTER-DAY SAINTS



VILLARREAL HUTNER PC



Justice Justice Foundation



HILLENDALE



FENNEMORE. Future Colours Corp



Garaventa Enterprises

McNabb Foundation



Friends for a Better Way Foundation



INDIVIDUAL HOUSEHOLDS

The Linnett Charitable Fund

Todd Black

Spalding Rooker

David and Kay Aaker

Nancy and Andrew Mayer

Brooks Family Trust

Charles and Karen Couric

The Edward and Elizabeth Kozel Foundation

Joan Murakami

The Norman and Joan Kinsey Foundation

In Memory of Michael Yamada

Trisha and Rick Oldenkamp

James May

Bill Sabin

Jason and Virginia Girzadas

The Bush Family

Lynn Fanelli

Luis Gerardo Del Valle Torres in Honor of Dr. Carol Weyland Conner

Hank Mindlin

Janet Iwanaga

Claudia Hansen Wentworth

Miles and Liz Palley

J Kendall and Tamera Anderson

Adams Family Foundation

FOOD DONORS

TOP FOOD DONORS



1,004,517 MEALS
1,205,421 lbs.



871,661 MEALS
1,045,994 lbs.



468,536 MEALS
562,244 lbs.



310,801 MEALS
372,962 lbs.



272,813 MEALS
327,376 lbs.



143,955 MEALS
172,746 lbs.



117,397 MEALS
140,876 lbs.



89,495 MEALS
107,394 lbs.



56,058 MEALS
67,270 lbs.



49,257 MEALS
59,109 lbs.



35,608 MEALS
42,730 lbs.



34,751 MEALS
41,702 lbs.

Acalanes Union High School District
Alameda Food Bank
Alpine Pastry and Cakes
Antioch Unified School District
Batter N' Icing
Bay Area European Market
Bevmo
Boichick Bagels
Bonami Baking Co.
Boundary Oak Golf Course
Bounty Garden
Brentwood Union School District
Broadway Plaza
C&L Produce
C&M Cordoves Distributing LLC
Califarm Produce Inc.
California Association of Food Banks
California Food Market Association
CCCFM
Central Foods
Chick-Fil-A
Church of Jesus Christ of Latter-day Saints
City of Concord
Classic Catering
Contra Costa County
Copia
Crow Canyon Garden
Dandelion Kitchen
Del Campo International Foods

Del Monte Foods
Diamond Ridge Post Acute LLC
Eagle Peak Montessori School
Embassy Suites
Family Harvest Farms
Fleming's Steakhouse
Food Bank of Contra Costa & Solano
Food Donation Connection
FoodRecovery.org
Fresh Approach
Frito-Lay Inc./PepsiCo
Galaxy Desserts
Glass Onion Catering and Gourmet Foods
Grocery Outlet
Harvest Foods
Islamic Cultural Center of Northern CA
Island Pacific Market
Ital Foods
Jmeza Produce
John Muir Health
Kaiser Permanente
Kisco Senior Living
La Superior Supermercados
Lafayette Community Foundation
Lafayette School District
Las Montañas Supermarket
Loaves and Fishes Family Kitchen
Localist
Los Medanos College

Magoo's Bar and Grill
Maison Benoit
Marriott
McDonald's
Methodology
Moraga School District
Morucci's Walnut Creek LLC
Mt. Diablo Unified School District
Niagara Bottling
Oakhurst Country Club
Oakley Union Elementary School District
Ocean Export
Orinda Union School District
Panera Bread
Paris Baguette
Pepsi Bottling Group
Pleasanton Unified School District
Pressed Juicery
Ramar International Foods
Replate
Rocco's Pizza
Rotary Club of Moraga
Rubicon Bakers
Saklan School
Salsa 4 All Seasons
Salvation Army
San Lorenzo Unified School District
San Ramon Medical Center
San Ramon Valley Unified School District

Sauced BBQ and Spirits
Second Chance Harvest
See's Candy
SJ Distributors
Skipolini's
Slice Out Hunger
Smith's Landing Seafood Grill
St. Mary's College
Strategic Solutions Inc
Sufism Reoriented
Sukhi's Gourmet Indian Foods
Sunrise Bistro
The Lot City Center at Bishop Ranch
The Mather Group
The Model Bakery
The Old Spaghetti Factory
The Original Mel's Diner
Toast
Total Quality Logistics
UC Master Gardener Program of CCC
Urban Organics
Urban Remedy
Valley Fine Foods
Walnut Creek Islamic Society
Walnut Creek School District
Walnut Creek Yacht Club
World Market
Yard House
Zephyr Bar and Grill

ENVIRONMENTAL IMPACT

Food waste is a major driver of the climate crisis. In the U.S., nearly 40% of all food is wasted, costing the economy \$408 billion annually. When food ends up in landfills, it generates methane, a greenhouse gas far more potent than CO₂. In California, wasted food is a leading source of methane emissions.

By recovering surplus food, WPE reduces emissions, conserves water, and protects natural resources. Food recovery is one of the most impactful climate solutions available today.

LIFETIME IMPACT



28,000,000
MEALS
RECOVERED



35,210,237
POUNDS OF
FOOD RESCUED



135,000
INDIVIDUALS SERVED
YEARLY



56,741
METRIC TONS OF
CO2 MITIGATED



893.80
TONS OF METHANE
MITIGATED



13,510
PASSENGER CARS
OFF THE ROAD



29.34
BILLION GALLONS
OF WATER SAVED

Environmental impact calculations based on ReFED.org calculator.

THE REAL COST OF WASTED FOOD

18%

of California landfill
waste is food.

3rd

largest source of methane
emissions in California is
organic waste.

1 in 5

Contra Costa County
residents face food
insecurity.

20%

of surplus food
must be recovered
under SB 1383.

VOLUNTEERS

THE HEARTBEAT OF WPE



2,000
AMAZING
VOLUNTEERS



24,463
VOLUNTEER
HOURS IN 2025



106
VOLUNTEERS WITH OVER
40 HOURS OF SERVICE



166
GROUPS
VOLUNTEERED

“What truly keeps me coming back is the community—people choosing to spend their time helping others. Being part of WPE has given me a sense of purpose beyond myself. It’s simply this: community, serving community.”

Taejin Chung

“For the community, I’ve been able to help families directly... guiding them through the basics of daily life until they were back on their feet. For myself, the impact has been profound: I’ve built deep friendships, gained a sense of purpose, and found a second family here.”

Sara Shirazi

“As a retired nurse, I’ve seen firsthand how vital nutrition is to health. Rescuing high-quality food from landfills and delivering it to our neighbors who need it most isn’t just rewarding—it’s essential”

Adelina Pilarski



Joyce Linnett has known White Pony Express for 13 years—ever since her husband, Mark, began volunteering. But it wasn’t until she started working in the distribution center in 2025 that she really appreciated WPE’s impact.

“I know the food I sort today will be on someone’s table tonight. No one should be food insecure in this day and age. I’m feeding my neighbors.”

For Joyce, WPE is more than a shift—it’s community.

“Ultimately, WPE is: Caring. Fun. Community.”

WPE SPECIAL PROGRAMS

SCHOOL PANTRIES

The White Pony Express School Pantry Program delivers fresh, nutritious food directly to schools in underserved communities, ensuring families have reliable access to healthy groceries.

The program now serves 23 schools across four districts, reaching nearly 30,000 students and their families with weekly deliveries of fresh produce and staple foods—even during summer and school breaks.

In 2025, WPE distributed 916,924 pounds of healthy food through this program, free of charge, helping children learn, grow, and thrive.



764,103

NUMBER OF MEALS DELIVERED



1 in 10

CHILDREN IN CC COUNTY LIVE IN POVERTY



23

NUMBER OF WPE SCHOOL PANTRIES



SENIOR SERVICES

White Pony Express helps ensure aging neighbors across our community have consistent access to nutritious food.

Each week, WPE supports seniors at nearly all 144 partner agencies, including 13 organizations dedicated exclusively to older adults. Through communal meals and pop-up pantries in residential communities, we deliver fresh produce, dairy, and protein directly where seniors live.

Reliable access to healthy food helps seniors maintain hope, health, and independence—an essential service as California's senior population continues to grow.



144

PARTNER AGENCIES SERVE SENIORS



7%

OF SENIORS IN CC COUNTY LIVE BELOW THE POVERTY LINE



13

WPE PARTNERS WHO SERVE SENIORS EXCLUSIVELY



WPE SPECIAL PROGRAMS

CLOTHING AND CARE

Through the Clothing and Care Program, White Pony Express rescues brand-new clothing, hygiene essentials, and toys that would otherwise end up in landfills and redistributes them to neighbors in need.

Since launching in 2014, the program has hosted hundreds of pop-up boutiques in low-income communities, where families—many experiencing homelessness—can “shop” for essentials in a warm and welcoming environment.

To date, more than 1.5 million items have been distributed through community events and agency partnerships.



1,500,000
CLOTHING AND CARE
ITEMS DISTRIBUTED



200
BABY BACKPACKS
DELIVERED IN 2025



2,500
HYGIENE KITS
DELIVERED IN 2025



FOOD RESCUE HERO APP

The Food Rescue Hero Initiative powers a real-time system that captures smaller, frequent food donations from local businesses.

Using the White Pony Express Food Rescue Hero App, volunteers quickly rescue surplus food and deliver it directly to nonprofit partners serving people facing hunger.

In 2025 alone, the program recovered over 800,000 pounds of food—nearly 675,000 meals—through 5,668 rescues from 96 donors delivering to 59 nonprofit partners, turning potential waste into nourishment for the community.



5,668
FOOD
RESCUES



96
FOOD
DONORS



221
ACTIVE
VOLUNTEERS

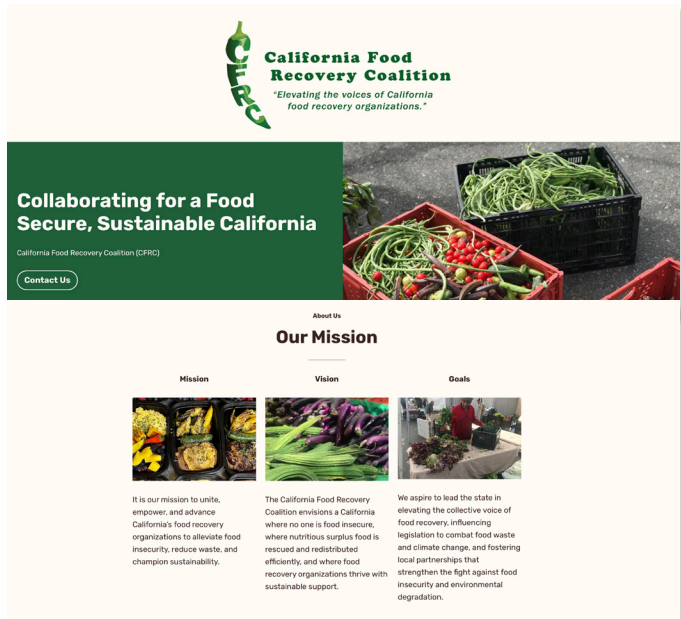


COLLABORATION



Food Security Collaborative

The Food Security Collaborative of Contra Costa County is a cross-sector partnership of leading nonprofits working together to address hunger and inequitable food access across the region. Formed in 2024 and guided by a shared vision of a food-secure county, the Collaborative uses data-driven strategies—such as a countywide food security equity map—to identify gaps in service, improve coordination, and expand access to culturally relevant, nutritious food. Through partnerships with community organizations, funders, and policymakers, the Collaborative advances both immediate hunger relief and long-term, community-informed solutions that address the root causes of food insecurity.



CA Food Recovery Coalition (CFRC)

WPE facilitated the formation of a statewide coalition of food recovery groups. The coalition unites, empowers, and advances CA's food recovery efforts to alleviate food insecurity, reduce waste, and champion sustainability.

The CFRC envisions a California where no one is food insecure, where nutritious surplus food is rescued and distributed safely and efficiently, and where food recovery organizations flourish with consistent, ongoing support.



Will Dittmar
Extra Food



Paddy Iyer
Daily Bowl



Eve Birge
White Pony Express

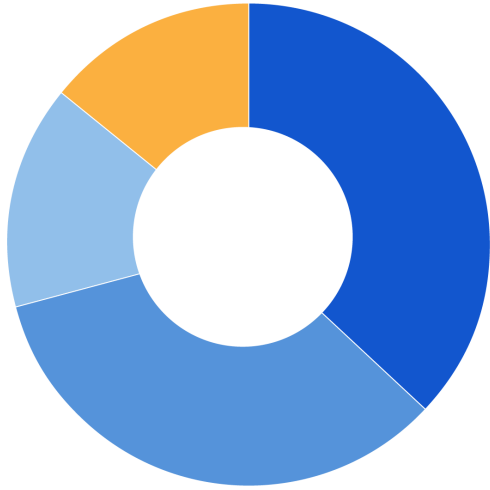


Mike Learakos
Abound Food Care



David Hott
Loaves and Fishes

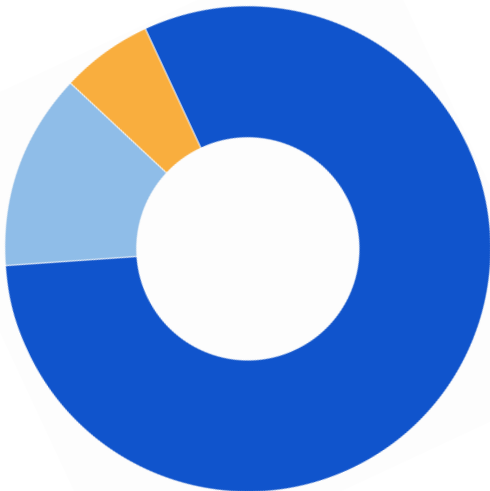
FINANCIALS



REVENUE AND SUPPORT

\$3,552,117

- **FOUNDATION GRANTS 41%**
- **INDIVIDUAL CONTRIBUTIONS 37%**
- **GOVERNMENT CONTRACTS 11%**
- **CORPORATE CONTRIBUTIONS 10%**



EXPENSES

\$2,855,588

- **FOOD RECOVERY PROGRAM 81%**
- **GROWTH AND DEVELOPMENT 13%**
- **ADMINISTRATION 6%**

UNITY



ALL OF US TAKING CARE OF ALL OF US



WHITE PONY EXPRESS | 2470 BATES AVENUE, SUITE D | CONCORD CA 94520

White Pony Express is an independent non-profit public benefit 501(c)(3) corporation. EIN 46-5220565



JOIN THE MOVEMENT



LEARN MORE



SUPPORT WPE